



#40384F

User Guide

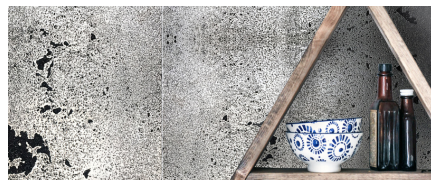
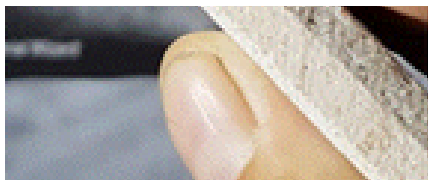
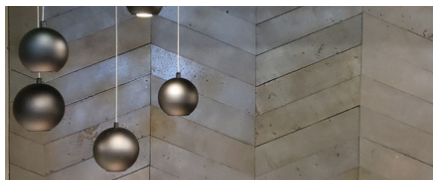
Textured Metal TSW



Generality

Welcome to the enchanting world of The Surface Wizard, where the elegance of concrete comes to life through ultralight panels offering the authentic appearance of concrete with refined texture.

Perfectly crafted to complement your decor, this detailed guide will walk you through every step, from purchase to installation, ensuring you an exceptional experience



Standard Sizes

4"x48" 8"x48"
16"x48" 24"x48"

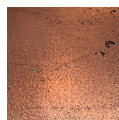
Colors



Antique
bronze



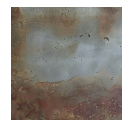
White
Bronze



Copper
Brown



Iron



Rusty

Description

Each TSW Textured Metal panel is crafted by combining a thin layer of high-performance concrete with a panel made of mineral fibers and magnesium oxide, with a thickness of ¼". An additional layer of metal, composed of 90% recycled metal dust, is then applied on top.

The Surface Wizard panels are handmade, providing exceptional lightweight and uniqueness to each piece through unique textures and patterns. By using natural materials, Textured Metal aligns with an eco-conscious approach while offering a metallic appearance and "real" concrete texture.

Each panel embodies uniqueness, lightweight, fire resistance, and ease of handling.

Application

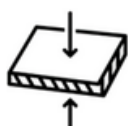
The Textured Metal panels are specifically designed for indoor use, meeting the needs of both residential and commercial projects. Depending on the desired aesthetic effect, these panels can be installed horizontally or vertically.

It is essential to note that their direct exposure to water, such as in a shower, as well as to intense heat beyond 200 degrees Celsius, is not recommended and should be avoided. Although fire-resistant, prolonged exposure of the panels to heat can alter the color.

Caractéristiques

Thickness

± 5/16" ±0,7%



Lightness

2,8 lb/p.c.



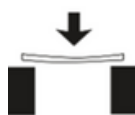
Splash-Resistant*



Fire Resistant

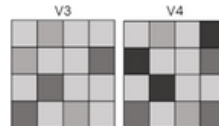


Bending Strength ASTM C348 > 11,4 Mpa



Color Variation

V3 - v4



*Apply the necessary products for increased surface protection.

Standard Formats and Packaging

4"x48"	
1.33 sq.ft.	4 panels per box (48 boxes per pallet)
8"x48"	
2.66 sq.ft.	4 panels per box (48 boxes per pallet)
16"x48"	
5.33 sq.ft.	2 panels per box (46 boxes per pallet)
24"x48"	
8 sq.ft.	2 panels per box (30 boxes per pallet)

Panel Measurement Tolerance: $\pm 0,5\%$



Usage

The Textured Metal TSW panels offer versatility in installation, suitable for a variety of substrates such as walls or ceilings, with the exception of glass and metal. Ideal supporting materials include fiber cement and plasterboard.

The panels are not designed to be installed in direct contact with water or exposed to high temperatures. However, they can be used in humid environments such as kitchen backsplashes or bathroom walls. In such cases, it is imperative to apply two coats of TSW Sealant and two coats of TSW Varnish for enhanced protection. It is important to note that installing the panels in a shower, on the floor, or on supports likely to be exposed to heat exceeding 200°C (392°F) is not recommended. Although the panels are fire-resistant, contact with heat can affect the color.

Shipping Costs and Delivery Times

Under the terms and conditions stipulated in this user guide and warranty, it is essential to clarify that the transport of the products is regulated by FOB (Free On Board) terms.

In accordance with this clause, once the products leave our facilities or warehouse, responsibility for delivery and associated risks pass to the recipient or its designated representative.

Accordingly, The Surface Wizard (TSW) assumes no liability for any damage, loss or delay occurring during transit once the merchandise has been released to a third party carrier under FOB terms.

It is strongly recommended that the recipient carefully examines the products upon arrival and immediately reports any damage or discrepancy caused by the carrier, so that appropriate claim procedures can be initiated.

Additionally, please note that The Surface Wizard warranty continues for any manufacturing defects, as stipulated in the warranty terms and conditions included in this user guide.

Warning and Liability Disclaimer

Before using The Surface Wizard products, it is imperative that the user researches and ensures they are suitable for the intended use, while carefully checking the contents of the order (color, size, quantity, and condition) upon receipt. The user assumes all risks associated with the products, regardless of their nature.

It is essential to strictly follow The Surface Wizard's recommendations regarding the handling, storage, and installation of the products. For detailed instructions, please refer to the Storage and Handling Guide as well as the Textured Concrete Panel Installation Guide.

It is important to note that TSW panels have no structural function and should not be used as a structural support. Their installation outdoors, on the ground, in direct contact with water (such as in a shower, basin, or pool) is prohibited. They should also not be exposed directly to intense heat or water before installation. The use of water-based glue for installation is to be avoided.

The Surface Wizard's Textured Metal panels are exclusively intended for decorative indoor use. Before installation, it is the user's responsibility to ensure that the structural surface is adequate, clean, smooth, and sufficiently resistant to support the weight of the panels.

When the user intends to use The Surface Wizard's Textured Metal panels for various applications such as kitchen backsplash, countertop, shower, fireplace surround, etc., it is imperative to ensure that the corresponding structural surface is suitable for the intended use. This involves adhering to specific standards for each application and ensuring that the existing structure can properly support the panels, while ensuring the safety and durability of the installation. It is recommended to consult appropriate standards and seek professional assistance if necessary to ensure proper use and compliance with regulations.

The Surface Wizard disclaims any liability for potential issues resulting from improper construction or restoration of the structural surface. Our liability is limited to any defects in the panels. We cannot be held responsible for incorrect installation or inadequate surface preparation. It is the user's responsibility to ensure that the underlying structure is adequate, complies with required standards, and that the installation is carried out according to the recommendations provided by The Surface Wizard.

***** ANY OPENED CONTAINER OR INSTALLED/APPLIED MERCHANDISE WILL NEITHER BE
REPLACED NOR REFUNDED *****

The images provided in this document are for illustrative purposes, and natural color variations may exist.

To fully appreciate these nuances, it is recommended to order product samples.

Guarantee

The warranty against manufacturing defects for Textured Metal panels is valid for 10 years, subject to normal use in accordance with The Surface Wizard's recommendations. Just like concrete or metal materials, it is normal for the finish to exhibit microcracks, irregularities, slight discolorations, and surface reliefs, which do not affect the integrity of the product. These features are part of the unique charm of each panel and are not considered manufacturing defects.

No warranty applies if the panel has been improperly transported, handled, incorrectly installed, or if it has suffered damage caused by a third party or due to installation on defective supports. There is no warranty of result. We invite you to consult the terms and conditions of sale available on The Surface Wizard's website.

Transport, Storage, and Handling of Panels

Transport the Textured Metal panels by keeping them on the edge (on the side) rather than flat in a closed vehicle.

During storage, place them on the edge of the length against a wall indoors, in a dry place protected from moisture and cold.

When unpacking the panels, verify that they match your order in terms of color, size, quantity, and condition. Store them on the edge of the length against a wall to avoid deformation, or simply stack them flat on a leveled floor. Let the panels absorb the room's moisture for about 24 hours before installation.

Although the panels have bending resistance, it is recommended to handle large formats with two people. During transportation, place them horizontally on a plywood board for large formats and make sure to transport them vertically. When handling by flipping the panels, hold them from both sides (width and length) being careful with the panel corners.

Refer to the Storage and Handling Guide in the appendix.

***** Wear protective equipment when handling, cutting, and installing the panels. *****



Safty
Glasses



Respiratory
Mask



Cut-Resistant
Gloves

Waste Management

Reducing the environmental footprint, take renovation waste to a sorting center or an eco-center. In Quebec, find a sorting center in your region at <https://www.recyc-quebec.gouv.qc.ca/>.

Distinctive Features of the Panels

What truly sets our panels apart are a multitude of unique features that give each piece a singular touch. Each panel is meticulously crafted with care, featuring characteristics that make it distinct from all others.

Note: The provided photographs are for illustrative purposes only. Some selected images may have been zoomed in to highlight specific features of a panel.

Crucial Installation Tip:

Given the unique nature of each panel, it is imperative to visualize the entire order (panels) before securing them to the wall. It is essential to understand the importance of selecting the panels accurately to ensure aesthetic harmony during installation.

• Unique cavities



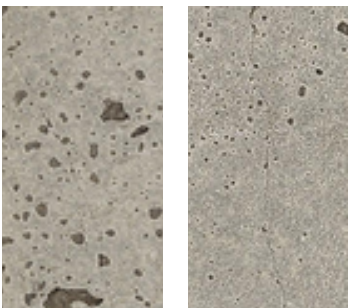
Through our manufacturing method, concrete is allowed to express itself spontaneously, resulting in the formation of 'holes.' TSW exercises no control over these cavities, allowing concrete the freedom to make its own decisions.

These cavities are present regardless of the choice of color or format, adding a natural and authentic dimension to each piece.



• Slight cracks

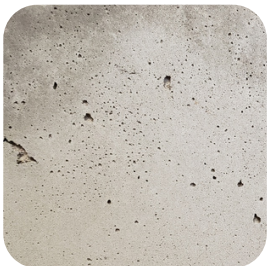
The appearance of slight cracks on the surface of the panel is inherent to the characteristics of the formwork used. These marks, which may manifest due to the manufacturing process, are a characteristic of concrete. It is important to note that these cracks pose no structural risk and are in no way considered manufacturing defects. Instead, they are a normal characteristic shared by all concrete materials



• Subtle cracks

When concrete sets and hardens, variations in the texture and porosity of the formwork surface can occur, resulting in visible rings on the surface of the poured concrete.

These rings are a natural consequence of the pouring technique.



• Color variations

The color variations observed in concrete lend the surface a unique and authentic appearance, imparting a captivating visual character. They reflect the organic nature of the material and its interaction with the environment.

These nuances contribute to the intrinsic beauty of the material, creating a visual depth that can be especially appealing in architectural and design projects.



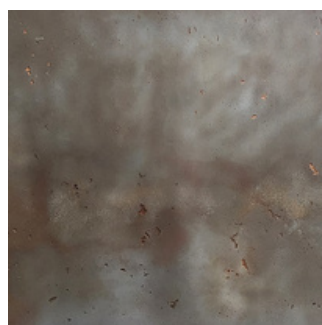
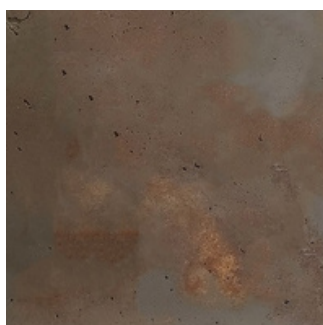
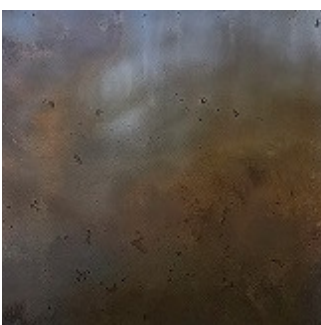
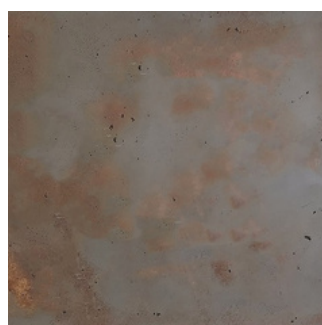
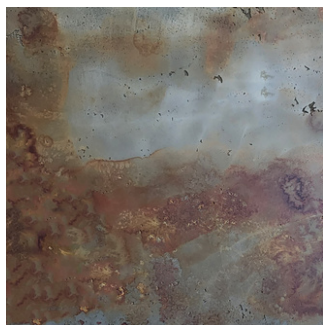
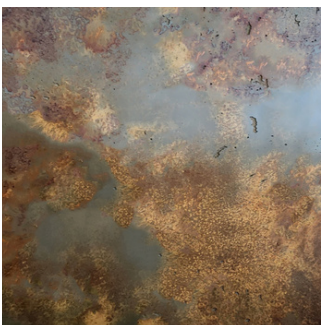
This characteristic should be considered when receiving a sample. Indeed, it is always taken from a large piece of panel. While this sample gives an idea of the color, it is important to note that it represents only one variation among many others.

+ The characteristics of Rust-colored panels

Each Textured Metal panel TSW - Rusty possesses unique characteristics, resulting in varying intensities of rust.

➡ In general, the rust rate varies from 50 to 60% across the production.

↪ The Surface Wizard can reduce this ratio by approximately 10 to 15%.



Photos for illustrative purposes only.

This is a small sample among many possibilities.

Panel Installation

Material to provide, if necessary

Products Recommended by TSW :

- Adhesive: Hybrid construction adhesive ADBOND EXTREME 5692 (solvent-free): 1 tube of 295 ml (10 oz) for approximately 32 sq.ft. of panels. It is essential to never use water-based glue for installation.
- Finishing Mortar (optional): Used to fill joint spaces or fill any installation holes. Available in a shade variation identical to that of the panels.
- TSW Sealant (optional): Highly recommended for additional protection of backsplashes and high-traffic areas.
- TSW Varnish (optional): Mandatory for wet surfaces, such as bathrooms (never install Textured Concrete in a shower or on the floor), as well as for enhanced backsplash protection.

Please note that these products are optional and their use depends on specific project requirements. Always follow the manufacturer's instructions for each product.



Before installation

• Preparing the support surface

Install the panels on a **flat, clean, dry, and dust-free substrate** to optimize the adhesive's grip.

If you choose not to use TSW Finishing Mortar to fill the 2 mm (1/16") joint spaces, it is recommended to paint the substrate in a solid color close to the panel color.

➡ This step will contribute to achieving optimal visual uniformity in the final appearance.

💡 The application of mortar to fill joints is not mandatory; this decision primarily depends on the aesthetic preference of the user or designer.

• The panels must be straight (not curved)

It is possible that a panel may exhibit a slight curvature due to temperature variations. To restore its original shape:

- Lightly moisten the back of the panel.
- Place it with the finished side down on a leveled support.
- Evenly distribute weight on top for 24 hours.
- Stacking multiple panels for this operation is permitted.

It is essential not to apply excessive pressure during installation to avoid any damage.

***** Avoid direct contact with intense heat or water at all times.*****

The installation



The installation of Textured Metal TSW panels is simple, carried out by direct gluing to the surface.

For larger-sized panels (starting from 24x48), it is essential to use one of the installation techniques (see below) to reinforce the panels' support while the adhesive dries.

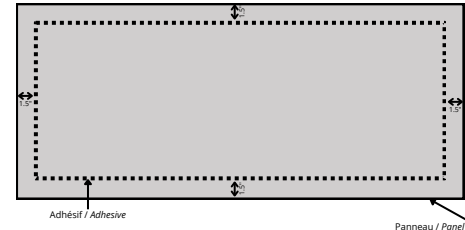


The panels must be glued with **a construction adhesive that is not water-based.**

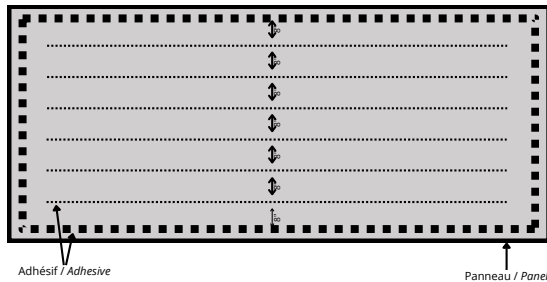
The Surface Wizard recommande l'adhésif à construction hybride, sans isocyanate, phtalate ou solvant ADBOND EXTRÊME 5692 (Adfast).

• Collage

- 1 Using a glue gun, apply the ADBOND EXTREME 5692 adhesive around the perimeter of the panel, at least 1.5" from the edge.



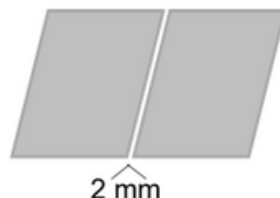
Apply adhesive inside in spaced lines approximately ± 8 .



- 2 Place the panel on the surface, starting from the bottom. Use the level to ensure that the panel is straight. Then, press lightly, starting from the edges of the panel. Subsequently, apply even pressure across the entire surface of the panel.



3. Repeat steps 1 and 2 for the other panels, leaving a gap of approximately 2mm between each panel.



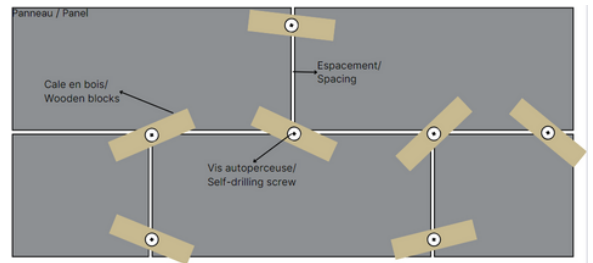
Drying time of the adhesive under the conditions specified by the manufacturer: 24 hours.

• Installation Technique

+ Option #1 : Wooden Shims

- Use self-drilling screws
- Screw the temporary support shims into the joint spaces.

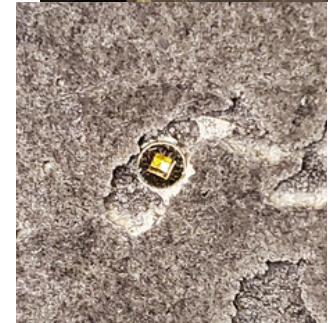
→ **For Concrete Surface TSW panels, this option is preferable.**



+ Option #2 : Screwing

- Use self-drilling screws (long drywall screws).
- Screw into the existing holes of the panel texture.
- Leave the screw heads visible.
- Remove them once the adhesive is dry.
- Fill the screw holes with TSW Mortar (Textured Concrete) or with paint provided by TSW (Textured Metal).

→ **This option is preferred if your panels are curved.**



+ Option #3 : Nailing

- Use finishing nails (18 Ga).
- Adjust the pressure on the gun accordingly.

• The cutting

The cutting procedure should be carried out in a well-ventilated area, using dust protection equipment.

It is recommended to cover the cutting area with painter's tape.

Length/width cutting of the panel can be done using a wet saw, angle grinder, or circular saw equipped with a diamond blade, placed against a guide rail and secured with clamps.

Do not use a mechanical tile cutter.

The cut edges should be smoothed using sandpaper.

To create openings for outlets, cables, etc., it is advised to cover the cutting area with painter's tape.

To initiate the cut:

- Drill a hole in the panel using a drill with a concrete bit.
- Use an oscillating electric saw to cut the desired shape.
- Smooth the edges of the cut with sandpaper.

Different options are possible for corner junctions, such as panel juxtaposition, cutting at a 45° angle, or adding a metal border.

To make a 45° angle cut, it is recommended to use a circular saw with a guide.

The various options

Juxtaposition



45° Angle



Metal Border



The different finishes

• The mortar

The Surface Wizard introduces Mortar TSW, meticulously crafted to complement the hues of Textured Concrete TSW and Smooth Concrete TSW panels.

However, for Textured Metal TSW panels, The Surface Wizard currently does not offer a mortar in the corresponding color.

Regarding joint treatment, two options are available:

1. Leave the joints unfilled.
2. Fill the joints with Mapei-style grout that closely matches the panel's color.



• The Sealant

During the final manufacturing phase, a layer of TSW Sealant is applied to the panels. On the installation site, it is recommended to add an additional layer of TSW Sealant for **enhanced protection of backsplashes, high-traffic areas, and heavily used surfaces**. Before application, ensure that the surface is free of dust, wiped, and completely dry.



The ideal application temperature for TSW Sealant is between 5°C and 25°C (41°F and 77°F), with an optimal range between 15°C and 20°C (59°F and 68°F).

To protect the edges of the surface to be treated, use painter's tape.

- Pour the sealant into a paint tray and start the application at the corners and edges using a stain and paintbrush.
- Then, apply the sealant across the entire surface in a thin layer, making sure not to leave excessive thickness.
- Remove any excess liquid and drips with a clean microfiber cloth. During drying, protect the unfinished surface from stains and damage.
- Remove the painter's tape while the sealant is still wet.

• The varnish

The TSW Sealant is suitable for any horizontal surface that does not require specific protection. However, the TSW Varnish, optional, **is recommended for surfaces exposed to moisture**, such as in the bathroom (note: do not install Concrete Surface TSW panel in a shower or on the floor) as well as **in highly-trafficked horizontal areas or for additional backsplash protection**.

For these specific applications, up to two coats of TSW Varnish can be applied as needed. Be sure to let the final coat of the sealant dry for at least 24 hours before applying the varnish.

The application temperature for TSW Varnish should be between 5°C and 25°C (41°F and 77°F), ideally between 15°C and 20°C (59°F and 68°F). Application can be done using a foam lacquer roller (water washable).

Allow 24 hours between each coat.

During the drying process, be sure to protect the unfinished surface from stains and damage. Remove painter's tape while the varnish is still wet.

Maintenance

The maintenance of Textured Metal panels is simple and effective.

To clean them:

1. Use a sponge soaked in warm water, without adding soap, and wring it well before applying it to the panels.
2. Then wipe with a clean cloth.
3. Let it air dry.

This method ensures easy cleaning while preserving the appearance and durability of the panels.

Equipment needed for installation

• For your protection



Gloves



Protective goggles



Dust protection mask

• For the installation of the panels



Protective sheets



Painter's masking tape



Microfiber cloths



Container for rubbles



Dust extractor



Angle square



Angle grinder



Circular saw with a diamond blade



Wet saw



Clamps



Guide rail for saw



Sandpaper sheets 120 & 220 grit



Caulking gun



Adbond extrême 5692



Beam level



Laser level

• For installing large panels



Wood shims



Finishing nails (18 Ga)



Nail gun



Self-drilling screws

• For making openings



A drill fitted with a concrete drill bit



Electrical oscillating saw

• For finishing the panels



Metal edge profile (i.e., Schluter®)



Grout sponge



Joint knife (4" or 5")



Measuring cup



Stain and paint brush



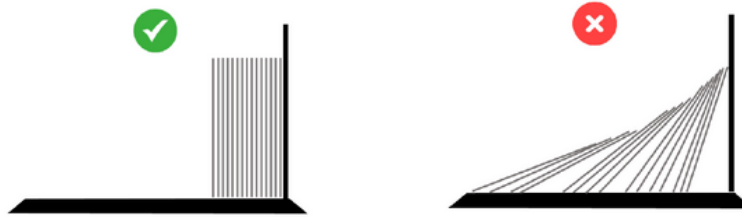
Slit foam lacquer roller



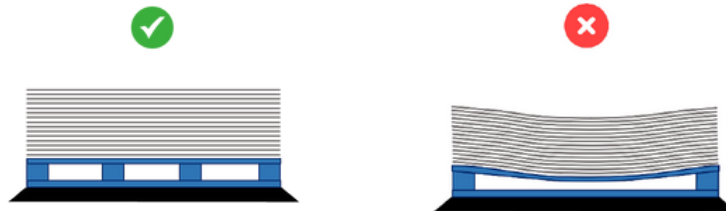
Storage and handling of panels

Storage

Option # 1: On the edge (side) of the length against a wall



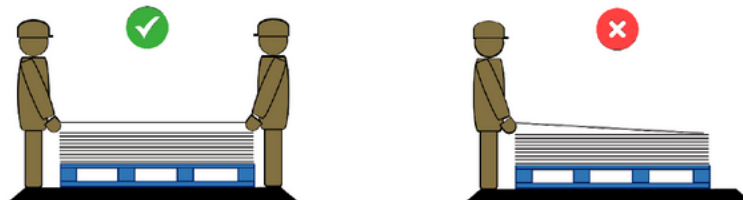
Option #2: Flat on a flat, sturdy support.



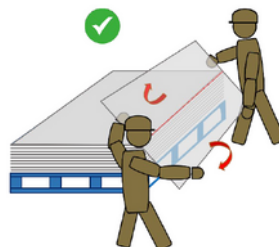
*****Indoor storage only*****

Handling

.A minimum of two people are required to handle the panels.



So that the center of the panel does not curve, rest it on the stack to make it pivot vertically.



The panels must be transported vertically.



The different products of The Surface Wizard.

TSW panels

Textured Concrete Surface TSW



Textured metal TSW



Sleek Concrete TSW



The TSW Micro-concrete Surface kits.

Wall Kit



Bathroom Kit



Floor Kit



Countertop/ Backsplash Kit



Installation products

Adbond Extreme



Finishing mortar



Sealer



Varnish



The different possible installations

PLACES	Wall (no water / no heat)				In contact with heat (maximum of 200°C)	Damp interior room (little)	In direct contact with water			Highly stressed surface
INTERIORS	Living room, Dining room	Bedroom	Kitchen (wall)	Ceiling	fireplace	Bathroom (wall)	Backsplash	Bathroom (inside the shower and around it)	Countertop	Floor
Peau de Béton - RAW	✓	✓	✓	✓	✓	✓	✓	✗	✗	✗
Peau de Béton - MIETAL	✓	✓	✓	✓	✗	✓	✓	✗	✗	✗
lightConcrete	✓	✓	✓	✓	✓	✓	✓	✗	✗	✗
Cheverons	✓	✓	✓	✓	✓	✓	✓	✗	✗	✗
Waxed concrete kit wall	✓	✓	✓	✓	✓	✓	✓	✗	✗	✗
Waxed concrete counter, floor and shower kit	✗	✗	✗	✗	✗	✓	✓	✓	✓	✓

*It is recommended to apply two coat of TSW SEALANT and 2 additional coats of TSW VARNISH
 ** The panels are fire resistant but prolonged contact with heat can alter the color of the panel.

Downloadable resources



<https://www.thesurfacewizard.com/documents>

Contact

Montréal, H4T 1Y4
 Québec, Canada

adminsitr@thesurfacewizard.com

www.thesurfacewizard.com


 The Surface Wizard