



The Surface Wizard

Installation booklet

The panels
The Surface Wizard



Panel Installation Guide

+ Receipt of order

IMPORTANT : Before signing the receipt of the goods, it is important to:

- 1- **Check the order** and ensure that the palette is identical to the photo sent by The Surface Wizard.
- 2- **Make the necessary reservations on the delivery note** (Possible damage/suspected hidden damage/damage to be inspected/etc.) in front of the delivery person/carrier.
- 3- If necessary, **take photos of the order received** and contact us directly.

After all these steps, sign the delivery note*.

**The Surface Wizard disclaims all responsibilities once the delivery note has been signed.*



conditional
upon



+ Pallet packaging

Textured panels (concrete and metal) A-frame pallets



Textured concrete and metal panels are fragile.

They must travel on their edge, not flat (on their side).



Sleek panels

Flat pallets



Sleek Concrete panels can travel flat, if on a pallet.



+ Quality control and packaging of the panels are carried out directly at our warehouse.

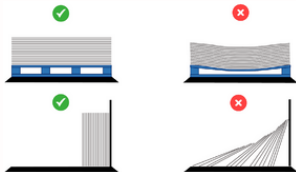
+ The pallet must remain sealed until receipt by the customer.



Storage and handling

Storage

Always store indoors, protected from bad weather and humidity.



Handling

A minimum of two people are required to handle the panels.



So that the center of the panel does not curve, lean it against the pile to rotate it vertically.



Panels must be transported vertically.



+ The necessary equipment

Pour votre protection



Gloves



Protective glasses



Protective mask against dust

For cutting panels



Clamps



a guide rail



masking tape

Several possible tools:



A tile saw



A wet saw



An angle grinder



A circular saw with blade diamond

For finishing



Sanding paper

To make openings



a drill equipped with
a concrete drill bit



an electric oscillating saw

For installation



Glue gun



Adbond extrême 5692



A level

Optional



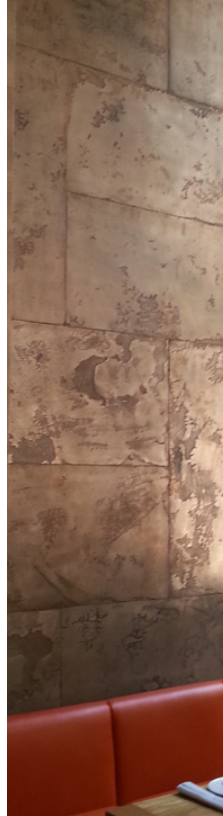
TSW Mortar



TSW Sealer



TSW Varnish





+ Preparation of the panels:

The panels must be straight (not curved) to be installed on the surface.

If they are not straight:

1. Lightly wet the back of the panel.
2. Place the panel with the finished side down on a leveled support.
3. Distribute weight evenly (not excessive) on the top for 24 hours.

+ The installation of the panels:

1- Using a glue gun, apply the adhesive ADBOND EXTREME 5692 around the perimeter of the panel, at least 1.5 inches away from the edge.

- For a vertical application: apply adhesive inside in vertical lines spaced approximately 8 inches apart.
- For a horizontal application: apply adhesive inside in horizontal lines spaced approximately 8 inches apart.



2- Place the panel on the surface starting from the bottom. Use the level to ensure the panel is straight. Then, lightly press on it starting from the edges of the panel. Afterwards, apply even pressure across the entire surface of the panel.

3- Repeat steps 1 and 2 for the other panels, leaving approximately a 2mm gap between each panel.



Drying time for the adhesive under the conditions specified by the manufacturer:: 24 hours



For large panels (starting from 24"x48"), it is essential to use one of the installation techniques (listed below) to reinforce panel support while the adhesive dries.

+ Installation Techniques

Several possible techniques* :

+ Option #1 : Wooden shims

- Use self-drilling screws.
- Screw temporary support shims into the joint spaces.



For Smooth Concrete panels, option #1 is preferred.

+ Option #2 : Screw Mounting

- Use self-drilling screws.
- Screw into existing texture panel holes.
- Leave screw heads visible.
- Remove them once the adhesive is dry.
- Fill the screw holes with TSW Mortar or with paint provided by The Surface Wizard.



This option is preferable if your panels are curved.

+ Option #3 : Nailing

- Use finishing nails (18 Ga)
- Apply the right pressure with the gun.



+ For ceiling installation:

- Minimum: 2 people
- Place each panel – finished side down – on a smaller plywood (support).
- Lift the panel horizontally to the ceiling.
- Glue and screw the panel (in the holes for textured panels).



+ Possible supports

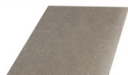
The surface that will receive the panels must be **flat, dry, dust-free, solid, smooth, and sound**.

+ Accepted supports:

- Drywall (gypsum)



- Fibercement



- Ceramic



+ Unsuitable supports:

- Metal



- Glass



- Marble



+ Surface preparation:

If the finishing mortar is not used to fill the joint spaces, it is recommended to paint the support with a solid color that closely matches the hue of the panels. This measure will ensure better uniformity and optimal aesthetic finish.



+ Where to install the panels







PLACES	Simple accent wall (no water / no heat)				In contact with heat (max. 392°F)	Damp interior room (little)	In direct contact with water		Highly stressed surface
INTERIORS	Living room / lunchroom	Bedroom	Kitchen (wall)	Ceiling	Fireplace facade	Bathroom (wall)	Backsplash	Shower walls	Flat and level surface
Textured Concrete Surface TSW	✓	✓	✓	✓	✓	* ✓	** ✓	✗	✗
Textured Metal TSW	✓	✓	✓	✓	✗	* ✓	** ✓	✗	✗
Sleek Concrete TSW	✓	✓	✓	✓	✓	* ✓	** ✓	** ✓	✗

*It is recommended to add two additional coats of sealer.

**It is recommended to add two additional coats of sealer and two coats of Silex varnish.

For your information: Our panels are fire-resistant, but prolonged contact with heat can alter the finish.

+ Panel performance

	Thickness : ± 0,7%	Ultralight	color variation	Splash resistance	In contact with water	Bending strength
						
Textured Concrete TSW	± 3/8"	2,8 lb/sq.ft.	+++	** ✓	✗	++
Textured Metal TSW	± 3/8"	2,8 lb/sq.ft.	++	** ✓	✗	++
Sleek Concrete TSW	± 1/4"	1,8 lb/sq.ft.	+	* ✓	** ✓	+++

*It is recommended to apply 2 additional coats of sealer

**It is recommended to apply 2 additional coats of sealer and 2 coats of varnish

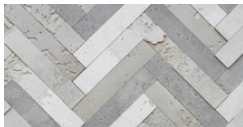
+ Unique features of textured panels

Here are some characteristics of the panels* over which The Surface Wizard has no influence, as concrete expresses itself freely.

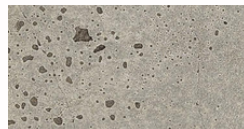
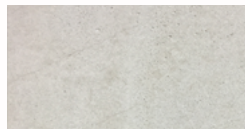
*Regardless of the chosen color or format.

+ Cavities

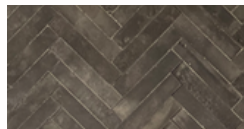
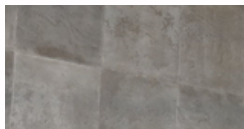
Like real poured concrete, the panels feature **cavities**, the quantity of which may vary across the surface.



+ Micro cracks



+ Color variations



+ Our achievements



Color palette: Mix of various panels



Color: Copper Brown



Color: Gray