



# How to install the panels



## 01 Before the application

### + Surface preparation

Ensure that your surface is prepared according to the guidelines specified in the corresponding [User Guide](#) for the panels you have chosen: it should be smooth, free of grease, and in good condition.

### + Panel preparation

The panels should be straight (not curved). If not:

1. Lightly moisten the back of the panel.
2. Place the panel with the finished side down on a level surface.
3. Evenly distribute weight (not excessive) on the top for 24 hours.

## 02 The cutting

### + Adequate protection:

Perform the cut in a well-ventilated area with dust protection equipment.

### + Preparation :

- The panel should be placed against a guide rail and held in place by clamps.
- Apply painter's tape along the entire cutting area.

### + Appropriate tools:

- A tile saw
- A wet saw
- An angle grinder
- A circular saw with a diamond blade

### + After the cut

Smooth the cut edges using sandpaper.

### + To make an opening:

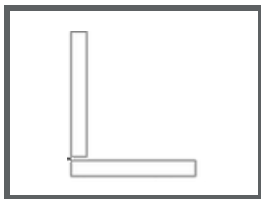
- Start by drilling a hole with a drill equipped with a masonry bit.
- Use an electric oscillating saw.



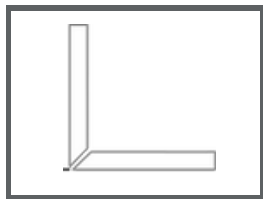
## 03 The corners

### + Three possibilities:

Adjacent

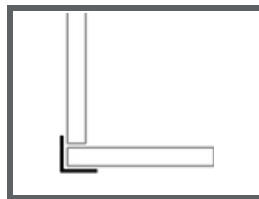


At a 45-degree angle\*



*\*Using a circular saw with a guide*

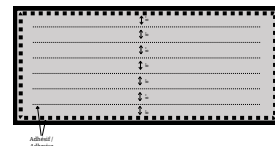
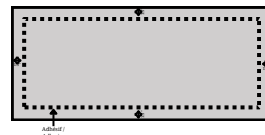
With a metal border



## 04 Collage

### + Application techniques:

1. Use the adhesive recommended by TSW and a caulking gun.
2. Apply glue all around the panel at least 1.5" from the edge.
3. Apply the adhesive to the inside of the panel in lines spaced  $\pm 8"$ .



## 05 Installation

### + Step 1

1. Place the panel on the surface starting at the bottom.
2. Use a level to make sure the panel is perfectly straight.
3. Apply light pressure starting at the edges of the panel.
4. Apply light pressure starting at the edges of the panel.

1



2



3

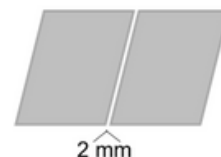


4



### + Step 2

Repeat steps 1 and 2 for the other panels, leaving a space of approximately 2mm between each panel.



## 06 Installation technique\*

Essential for large panels (24x48 and larger).

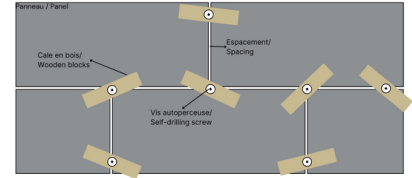
**In addition to bonding**, to reinforce the hold of the panels while the adhesive dries (24 hours).

### + Option #1 : wooden blocks

- Use self-drilling screws;
- Screw the temporary support wedges into the joint spaces.



**Recommended technique for Sleek Concrete.**

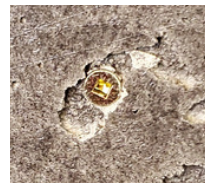
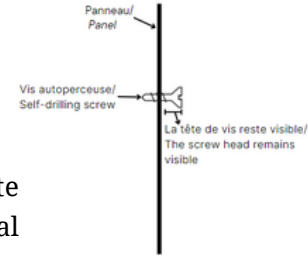


### + Option #2 : screwing

- Use self-drilling screws;
- Screw into the existing holes in the texture of the panels;
- Leave the screw heads visible;
- Remove them once the adhesive is dry.
- Fill the screw holes with TSW Mortar (for Textured Concrete panels) or with the paint provided by TSW (for Textured Metal panels). Smooth out excess mortar with a damp.

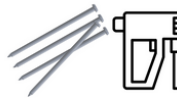


**Recommended technique if your panels are curved.**



### + Option #3 : Nailing

- Use finish nails (18 Ga).
- Apply the right pressure to the nail gun.
- Screw into the existing holes in the panels.



## For a ceiling installation:



- Minimum: 2 people
- Place each panel - finished side down - on a smaller plywood (support);
- Lift the panel horizontally up to the ceiling.
- Adhere and screw the panel.



## 07 Useful links

Downloadable resources:



Do you have a question? Have you checked our [FAQ](#) ?