



#4D384F

User Manuel

Micro-Concrete Surface TSW



Generalities

Explore a world where the beauty of concrete meets contemporary elegance. With The Surface Wizard's polished concrete, transform every surface into a refined work of art, blending durability and aesthetics for an incomparable style.

Standard kit formats

Wall kit:

10, 30, 55, 120 p.c.

Bathroom kit:

10, 25, 50, 110 p.c.

Countertop and backsplash kit:

10, 25, 50, 110 p.c.

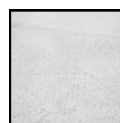
Floor kit:

10, 25, 50, 110 p.c.

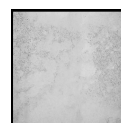
Colors



White



Ice



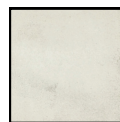
Ciment



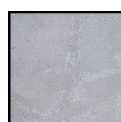
Granite



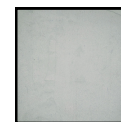
Gunmetal



Earth
Gray



Azure Blue



Tropical
Gray

Description

Discover the ultimate revelation in the world of surface coatings: **Micro-Concrete** by The Surface Wizard. With a seamless fusion of traditional craftsmanship and modern innovation, our micro-concrete embodies contemporary elegance and uncompromising durability.

The Surface Wizard's micro-concrete offers unparalleled versatility, adapting to a multitude of surfaces to create unique and captivating spaces. Whether for a sophisticated kitchen, a welcoming living room, or a luxurious bathroom, our micro-concrete transforms every environment into a functional work of art.

Its exceptional resistance to impacts, scratches, and stains makes it a wise choice for high-traffic areas, while offering unmatched ease of maintenance. With The Surface Wizard, your surface remains impeccable and dazzling year after year.

Our commitment to sustainable innovation means that our micro-concrete is not only beautiful but also environmentally friendly. Made with high-quality materials and eco-responsible production processes, you can enjoy your space with peace of mind, knowing that you have chosen an eco-friendly solution.

For a design experience without compromise, choose micro-concrete by The Surface Wizard.

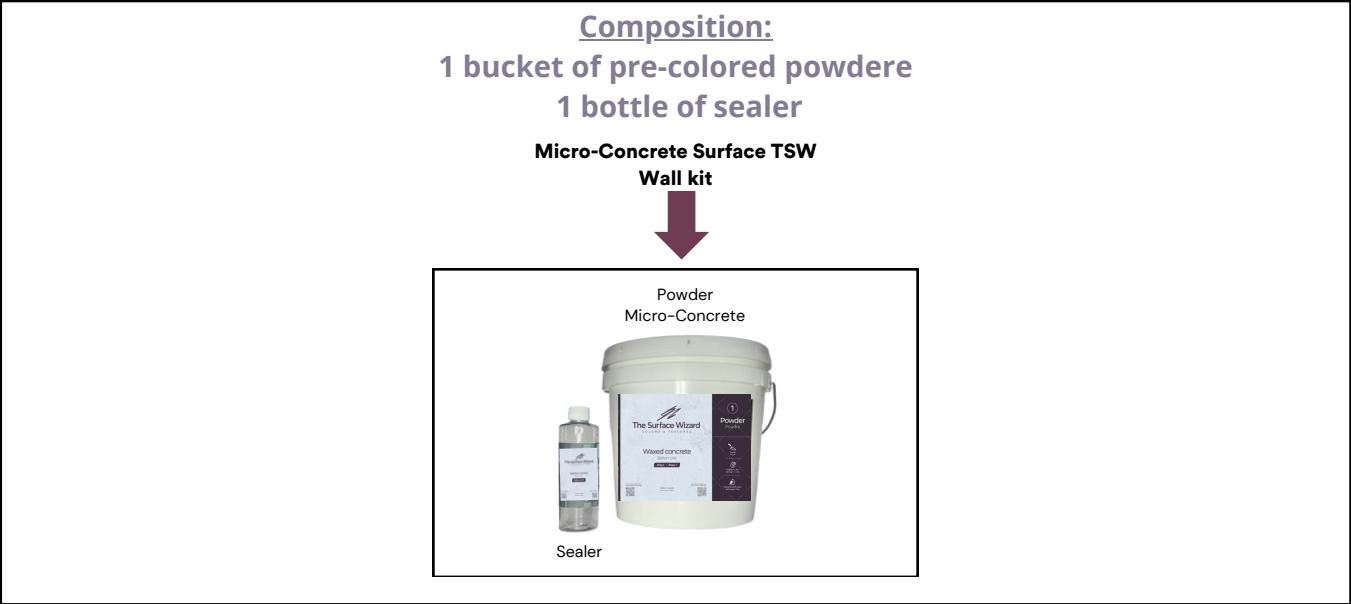
Application

The application of micro-concrete is simple and versatile. Use a trowel to apply it to a variety of surfaces, except glass and metal. Perfect for walls, floors, countertops, and even showers, its smooth finish and subtle visual effects make it an ideal choice for a modern touch in any room.

Composition of the kits

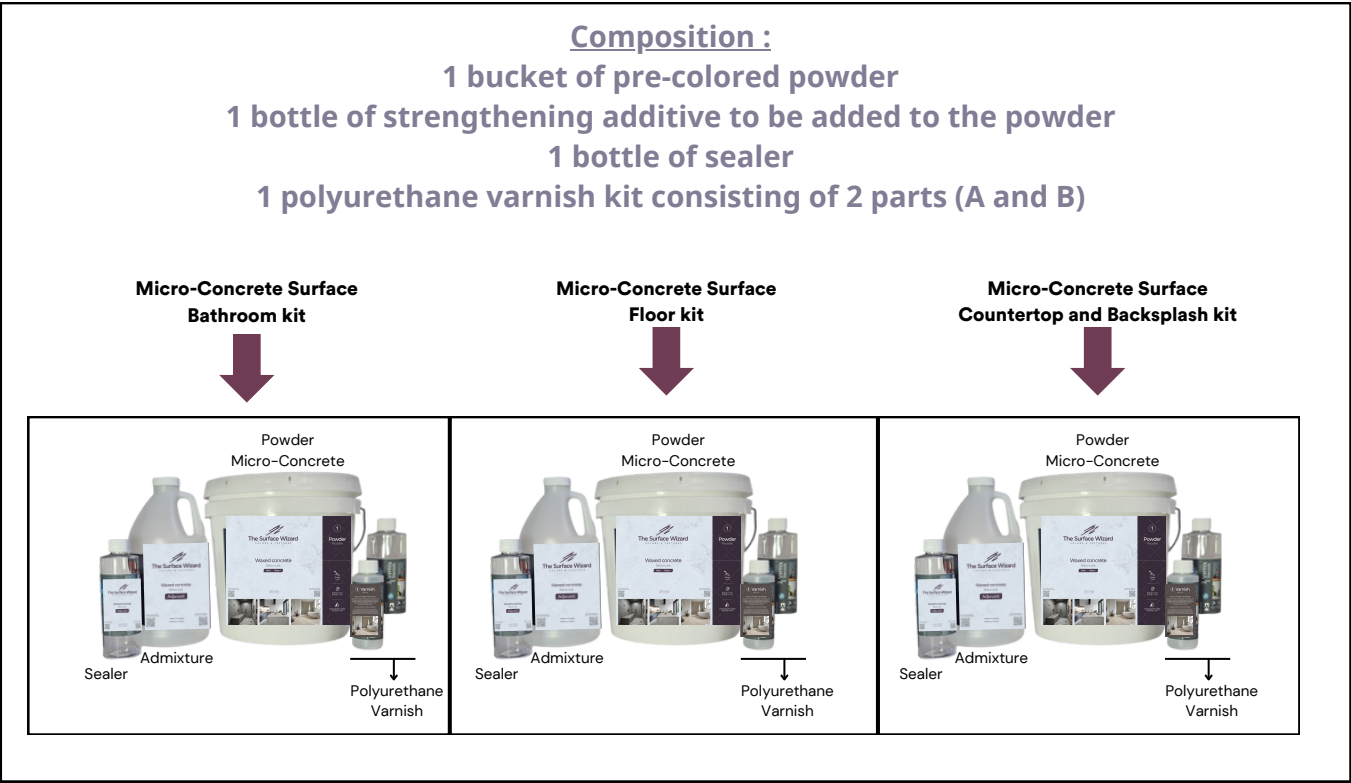
To avoid running out of product, it is recommended to plan for an additional quantity of approximately **10%**.

For low-traffic surfaces, the wall kit is ideal!
3 kits: 10, 55, 120 sq ft



The wall kit contains enough quantity for **two coats of micro-concrete** and **one coat of sealer**.

For high-traffic surfaces - Opt for increased protection!
4 kits: 10, 25, 50, 110 sq ft



Each of these kits for high-traffic surfaces contains the quantity necessary to apply **two coats of micro-concrete**, **two coats of sealer**, and **two coats of water-based polyurethane varnish**.

Usage

Micro-Concrete coating is a 2 mm (1/16") thick layer, applied in **two thin coats** directly onto various interior substrates such as MDF, drywall, or gypsum, whether they are new or already painted.

It can also be applied over old tiles or a concrete floor, with additional surface preparation required (please consult The Surface Wizard for further information).

Note that Micro-Concrete cannot be used on glass, metal, or a wooden floor.

With its fire resistance, waterproofing, and antibacterial properties, once applied, Micro-Concrete is perfectly suited for fireplace surrounds, floors, and humid environments.

Coûts du transport et délais de livraison

In accordance with the terms and conditions outlined in this user and warranty guide, it is important to note that the transportation of products is governed by the FOB (Free On Board) terms.

Under this clause, once the products leave our facilities or warehouse, the responsibility for delivery as well as the associated risks are transferred to the recipient or their designated representative.

Therefore, The Surface Wizard (TSW) disclaims any responsibility for damages, losses, or delays occurring during transit once the goods have been handed over to a third-party carrier in accordance with the FOB terms.

It is recommended that the recipient carefully inspect the products upon arrival and report any damage or irregularity to the carrier immediately in order to initiate appropriate claim procedures.

The delivery time for Micro-Concrete kits may vary from 5 to 10 business days, depending on available inventory, preparation time, handling, and transportation, following the product code and quantity ordered. For a successful delivery, the recipient of the order is requested to check their emails (including the spam/junk email folder) for the confirmation email of their order shipment.

Features

Layer thickness ± 2 mm	Application with a trowel	Water-resistant*	Fire resistant	Easy to clean with mild and organic products	Antibacterial	Color variation V2 - V3
						

*The kits for the bathroom, for backsplashes and countertops, and for floors are water-resistant. The wall kit is splash-resistant only.

Warning and Liability Disclaimer

Before using The Surface Wizard products, it is imperative that the user researches and ensures they are suitable for the intended use, while carefully checking the contents of the order (color, format, quantity, and condition) upon receipt. The user assumes all risks associated, regardless of their nature.

It is essential to scrupulously follow TSW's recommendations regarding the handling, storage, and installation of the products.

It is important to note that TSW Micro-Concrete Surface has no structural function and must not be used as a structural support. Its installation outdoors is prohibited.

Micro-Concrete is exclusively intended for **decorative indoor** use. Before installation, it is the user's responsibility to ensure that the structural surface is adequate, clean, smooth, and free of cavities.

When the user intends to use TSW Micro-Concrete for various applications such as kitchen backsplashes, countertops, showers, floors, or any other high-traffic surface, it is imperative to use the appropriate kit (which contains additive - sealer and polyurethane varnish) and to ensure that the corresponding structural surface is suitable for the intended use. This involves adhering to specific standards for each application and ensuring that the existing structure can properly support the use while ensuring safety and durability of the installation. It is recommended to consult appropriate standards and to seek professional help if necessary to ensure proper use and compliance with regulations.

The Surface Wizard disclaims any liability for potential issues resulting from improper construction or restoration of the structural surface. We cannot be held responsible for incorrect installation or improper surface preparation. It is the user's responsibility to ensure that the underlying structure is adequate, compliant with required standards, and that the installation is carried out according to the recommendations provided by The Surface Wizard.

***** ANY OPENED CONTAINER OR INSTALLED OR APPLIED MERCHANDISE WILL NOT BE REPLACED OR REFUNDED *****

The images provided in this document are for illustrative purposes, and natural color variations may exist.

To fully appreciate these nuances, it is recommended to order product samples.

Warranty

No warranty is provided for products from Micro-Concrete kits once applied or if the applied surface has been damaged by a third party or due to installation on defective substrates.

There is no guarantee of results.

Transport, Storage, and Handling

The containers, fully recyclable, can be heavy and require careful handling. It is recommended not to store them in direct sunlight, extreme heat, or below 5°C (41°F), but rather in a dry place, protected from moisture and cold.

Upon receipt, please verify that the products conform to your order in terms of color, type, and quantity.



Micro-Concrete contains cement and may cause irritation. The edges of the trowel are as sharp as a razor blade.



***** Wear protective equipment when handling, cutting, and installing the panels.*****



Safety goggles



Respiratory mask



Cut-resistant gloves

Waste management

To reduce environmental footprint, store concrete residues in a bucket and avoid pouring them down drainage systems. For renovation waste, including bulk concrete aggregates, please bring them to a sorting center or an eco-center.

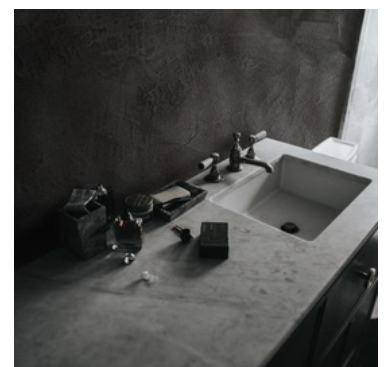
In Quebec, find a sorting center in your area at <https://www.recyc-quebec.gouv.qc.ca/>.

Characteristics of micro-concrete

• Color variation

The color and texture variations of micro-concrete bring remarkable visual authenticity to each surface. They reflect the natural richness of the material, captivating the eye with their organic character and resonance with the environment.

These nuances enhance the beauty of micro-concrete, infusing it with captivating visual depth. They introduce a unique aesthetic dimension, perfectly suited to the most demanding architectural and design projects.



Application of micro-concrete

Equipment to prepare, if needed

Products recommended by TSW:

- TSW floor and wall primer, optionally, depending on the required preparation of the substrate surface
- TSW trowel
- TSW sponge
- TSW measuring cup

Please note that these products are optional, and their use depends on the specific requirements of the project. Always follow the manufacturer's instructions for each product.



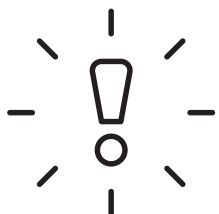
Before installation

• Surface substrate preparation

The surface to be coated must be **flat, sound, solid, clean, dry, and free of dust**. The Surface Wizard also recommends always applying a primer layer.

➡ Before applying our micro-concrete, it is crucial to carry out necessary repair work on the surfaces to be coated. This includes addressing any water leaks or infiltrations, as well as any required structural consolidation. If the substrate surfaces have significant roughness or cracks due to structural movements of the building or unresolved damage, it is imperative to repair them first. It is important to note that our micro-concrete will not conceal these pre-existing defects; on the contrary, they may eventually reappear on the surface of the micro-concrete.

💡 It is strongly advised to conduct coating tests on a small part of the surface to be covered.



***The advice provided in this guide is for informational purposes only and cannot replace the expertise of a renovation professional. It is essential to research the standards and best practices for renovation and construction, depending on the intended use.

The Surface Wizard does not have expertise in renovation or construction. Therefore, it is the responsibility of the customer to ensure that their renovation or construction is carried out according to appropriate standards and industry best practices. We provide advice specifically on the application of micro-concrete, but it is the customer's responsibility to ensure that their project is carried out properly and safely, by engaging qualified professionals as needed.***

• Surface preparation for walls or ceilings

Our micro-concrete can be applied to new or already painted walls and ceilings, provided they have been repaired and cleaned according to our recommendations.

If the wall is covered with wallpaper, it is essential to completely remove it, clean the surface, and prepare it (primer) evenly to avoid any color differences on the final coating.

For a new surface, always apply a primer for uniformity of the final result.

• Surface preparation for floors or showers

For **new shower installations and complete renovations**, it is essential to install a waterproof membrane, similar to that used for ceramic tile installation, before applying micro-concrete.

A floor surface must be repaired and prepared using TSW floor and wall primer before applying micro-concrete. Do not apply micro-concrete directly onto a wooden floor. For floors, it is only possible to apply to a clean, dry, and sound concrete floor.

Porous surfaces such as plaster, brick, or concrete block must be repaired and prepared with TSW floor and wall primer before applying micro-concrete.

For an epoxy surface, it is necessary to sand it and remove dust beforehand. Any cracks must be filled.

Regarding a **tiled surface** with grout joints, regardless of the material, it must be prepared using a leveling compound to fill and level the joint spaces. Then, it must be sealed with a layer of TSW sealer before applying micro-concrete.

• Surface preparation for floors or showers

Before applying micro-concrete to the floor surface, it is possible to install underfloor heating according to the manufacturer's recommendations. Ensure to use a surface self-leveling compound for even heat distribution. Then, prepare the floor with floor and wall primer before applying micro-concrete.

• Temperature and application duration

The ideal temperature for product application is between 5°C and 25°C (41°F and 77°F), with a preference for a range of 15°C to 20°C (59°F and 68°F). At a temperature of 20°C, the working time of the micro-concrete is approximately 20 minutes, allowing to cover about 20 square feet of surface.


The behavior of micro-concrete is influenced by ambient temperature, so it is crucial to adjust your mixture accordingly. In case of heat, it is recommended to slightly increase the amount of water added to the mixture, while ensuring not to add too much.

Coating mixture

The micro-concrete coating is delivered in the form of **pre-colored powder**.

- For walls and ceilings: mix the powder with clean water.
- For floors, countertops, backsplashes, and showers: use the provided TSW additive.

It is essential to plan the amount of coating needed, calculate your surface area (in square feet), and add 10%.

 Do not mix more than 4 kg of powder at a time, as the working time of the coating is approximately 20 minutes.



Micro-concrete, due to its cement-based composition, **can cause skin irritations**.

Additionally, the edges of the trowel are as sharp as a razor blade.

It is imperative to wear protective equipment when handling and applying the product.

Before starting mixing, TSW recommends mixing the pre-colored powder well to ensure even distribution of pigments in the bucket.

• Mix for wall application

1. For the initial mixture, measure a maximum of 4 kg (8.8 lbs) of powder for approximately 1 L (33.8 oz) of water. The ratio is 4 parts of powder to 1 part of clean water. Prepare the required amount of water in a graduated container.
2. In a clean bucket, pour the powder (up to 4 kg), then add 90% of the required amount of water.
3. Mix the contents using a low-speed mixer, such as a drill equipped with a mixer attachment.



Depending on the consistency obtained, you can add a little more water if necessary. Be sure to note the total amount of water added to maintain the same powder/water ratio for all mixes, to avoid large color variations.

The final mixture should be homogeneous, without lumps, and have a smooth consistency while being able to adhere to the trowel.



Let the coating rest for about 5 minutes before starting the application.

- Mix for application for bathrooms, backsplashes and countertops, or floors



POWDER - ADJUVANT mixture

1. For the initial mixture, measure a maximum of 4 kg (8.8 lbs) of powder for approximately 1 L (33.8 oz) of adjuvant. The ratio is 4 parts of powder to 1 part of additive. Prepare the required amount of additive in a graduated container.
2. In a clean bucket, pour 50% of the prepared powder (= 2kg out of 4kg), then add 50% of the required amount of adjuvant (= 500 ml out of 1 L).
3. Mix the contents using a low-speed mixer, such as a drill equipped with a mixer attachment.
4. Complete the mixture with the remaining adjuvant (the remaining 500 ml), then add the remaining powder (the remaining 2 kg). Mix again.
Depending on the desired consistency, you can add a little more water if necessary.



Be sure to note the total amount of adjuvant added to maintain the same powder/adjuvant ratio for all mixes, to avoid large color variations.

The final mixture should be homogeneous, without lumps, and have a smooth consistency while being able to adhere to the trowel.



Let the coating rest for about 5 minutes before starting the application.



Precautions and waiting time

After applying each layer of Micro-Concrete, Sealer, or water-based polyurethane, be sure to **remove the protective painter's tape while the mortar or product is still wet.**

Clean tools immediately with water before the Micro-Concrete begins to harden. Be very careful as the edges of the trowel are very sharp.

To protect the unfinished coated surface from external elements such as wind, sun, and frost, as well as risks of stains and damage, during drying and curing periods, **wait between 12 and 24 hours after each step before working on the surface again.**

Micro-concrete application technique

The Micro-Concrete coating is applied using a **stainless steel trowel** and a joint knife in two thin cross-coats of approximately 1 mm (1/25") thickness each, using various techniques.



If the applied layers are too thick, the quantities of products included in the kit may not be sufficient.



The application technique and the number of layers are the same for both the wall kit and the bathroom, floor, countertop, and backsplash kits.

• First layer of Micro-Concrete

+ Preparation :

Apply painter's tape along the outer edges to protect them from spills.

+ Mortar transfer :

Use the joint knife to transfer the mortar onto the trowel.



+ Centering:

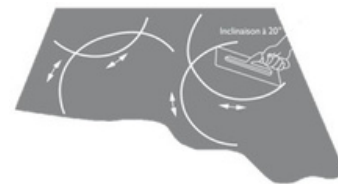
Follow the plasterer's technique by regularly centering the material on the trowel with the joint knife to avoid excessive thickness.

+ Corners and edges:


Also use the joint knife to apply the mortar on the edges and corners, avoiding repetitive movements in the same place during application.

+ Trowel application:

Pass the trowel with a 20° inclination of the edge, making overlapping semi-circular movements.




+ Smoothing:

Use a damp sponge  to remove excess mortar and smooth the application. Rinse and wring out the sponge after each pass.

+ Cleaning:

Remove the painter's tape and clean the tools while the mortar is still wet.

+ Drying:

 Allow the first layer to dry for 12 to 24 hours, protecting the unfinished surface from stains and damage.



• Second layer of Micro-Concrete

+ Preparation:

Apply painter's tape along the outer edges to protect them from overflow.

+ Scratching:

Use the joint knife to scratch the dry surface and remove the granules from the first layer.

+ Mortar transfer:

Use the joint knife to transfer the mortar onto the trowel.



+ Centering:

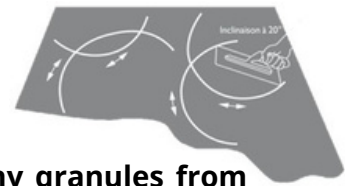
Follow the plasterer's technique by regularly redistributing the material on the trowel with the joint knife to prevent excessive buildup.

+ Corners and edges:

Also, use the joint knife to apply the mortar to the edges and corners, avoiding repetitive movements in the same spot during application.

+ Trowel application:

Pass the trowel at a 30-degree angle from the edge, making crosswise semi-circular movements.



Use the joint knife to scrape the dry surface and remove any granules from the first layer.

+ Finishing:

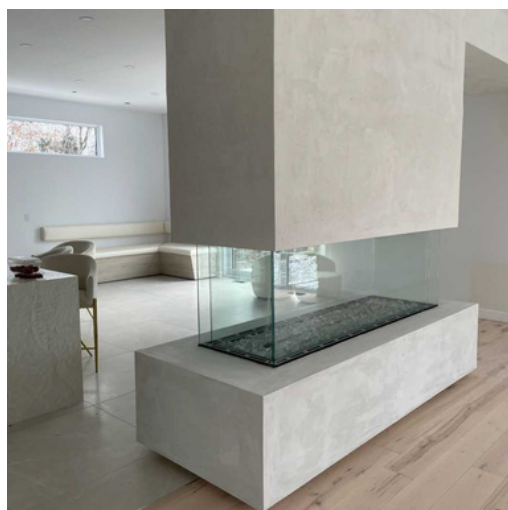
For lighter shades, smooth the surface with a plastic trowel to avoid dark traces left by the stainless steel trowel.

+ Cleaning:

Remove the painter's tape and clean the tools while the mortar is still wet.

+ Drying:

Let the first coat dry for 12 to 24 hours, protecting the unfinished surface from stains and damage.



Sanding the coated surface



Sanding is not intended to remove major imperfections, but only to smooth the surface.

If you want a smoother or rougher final result, you need to plan for it during the application of the second coat. To achieve this, smooth the layer with the trowel as soon as it starts to set.

Once the layer is completely dry, it's no longer possible to change the unwanted textures.

+ Preparation:

After allowing the second coat to dry for at least 24 hours, you can prepare for the sanding phase.

+ Grain Choice:

Start sanding the surface with 120-grit sandpaper, then switch to 220-grit to smooth out irregularities and achieve a smoother finish. For larger surfaces, you can use an orbital sander.

+ Sanding:

Sand the surface in regular movements to level it and bring out the smooth raw finish of the material.

+ Cleaning:

After sanding, ensure to thoroughly dust off the surface by damp sweeping. Then, let the surface air dry.

+ Protection:

Protect the unfinished surface from stains and damages during this phase and afterward.

Sealant Application



Make sure the sanded surface is completely dry, dust-free, and clean before starting the Sealant application. Poor surface preparation can result in dust particles rising during the Sealant application.

Number of coats: Apply:

- a single coat of Sealant for wall or ceiling surfaces.
- two coats for floors or bathrooms, backsplashes and countertops.

+ Edge protection:

Protect the edges of the surface with painter's tape to prevent spillage.

+ Preparation of the sealant:

Pour the sealant into a paint tray for easier application.

+ Application :

Start at the corners and edges using a stain brush, then apply the sealer to the entire surface using a stain pad.

Apply it in a thin layer, taking care not to leave any excess.

+ Sealant penetration:

Make sure to penetrate the Sealant well to saturate all the pores of the surface and seal the concrete.

+ Withdrawal of surpluses:

Use a clean microfiber cloth to remove excess liquids and spills.

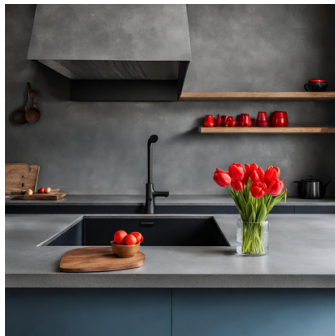
+ Protection during drying:

While drying, protect the unfinished surface from stains and damage.

+ Waiting time:



Wait at least 6 hours between each coat to allow complete drying.



Application of polyurethane varnish



After the final coat of sealer has dried for at least 24 hours, prepare to apply two (2) coats of water-based poly urethane varnish to floor surfaces, counters, backsplashes and showers.

Reinforced protection: TSW varnish offers increased protection, ideal for areas subject to high stress.

+ Conditions of application :

Ensure the room temperature is between 5°C and 25°C (41°F and 77°F), preferably between 15°C and 20°C (59°F and 68°F) for best results optimal.

+ Edge protection:

Protect the edges of the surface with painter's tape to prevent spillage.

+ Application :

Use a water-washable foam paint roller to apply the two thin coats of varnish. Make sure to apply the coats evenly over the entire surface.

+ Waiting time:



Wait 12 hours between each coat to allow adequate drying.

After applying the final coat, wait at least 24 hours before walking on the floor surface or using the shower.

+ Protection during drying:

While drying, protect the unfinished surface from stains and damage to ensure long-lasting, aesthetically pleasing results.

Space Arrangement



Maximum hardness of a water-based urethane is reached approximately 20 days after application.

It is recommended to wait at least **1 week** before placing heavy furniture on the varnished surface to avoid the risk of marks on the floor.

+ Durability and protection:

To ensure maximum and lasting protection over time, it is recommended to apply a new coat of polyurethane varnish every two years. This will ensure the preservation of the appearance and quality of your Micro-Concrete surface.

+ Installation of accessories:

You can drill into the finished Micro-Concrete surface to install accessories such as a wall-mounted picture, a doorstop on the floor, or a soap holder in the shower.

Make sure you have completed all the application steps of the Micro-Concrete before screwing the accessories in place with appropriate tools suitable for the materials of the structural supports behind the Micro-Concrete (wood, MDF, concrete, etc.).

+ Lighting:

Design optimal lighting to enhance the product's reflections, which can absorb or reflect light depending on the exposure and colors of the luminaires used.

+ Maintenance:

Finished Micro-Concrete surfaces can be easily cleaned without soap or with mild organic products. Use a sponge dampened with warm water and wrung out for effective cleaning.



Equipment Required for Installation

• For your protection



Gloves



Protective glasses



Protection's mask against dust

• For Surface Protection



Bâche de protection



Painter's tape



Microfiber cloths



Waste container

*Protect your surface the same way you would paint.

• For mixing the coating



A bucket for mixing mortar



A measuring cup



A mortar mixer (optional)



A drill (optional)

• For applying the coating



A flexible stainless steel trowel with progressive rounded edges and corners



A 4" or 5" joint knife



A grout sponge

• For sealant application



A paint tray



Microfiber cloths



A paint brush



Dye pads



Foam lacquer roller

• For sanding



120 and 220 grit sandpaper



Eccentric sander (optional, ideal for a large surface)

• For applying varnish



A clean paint tray



Foam lacquer roller



A paint brush





Accepted substrates

Accepted substrates:

- Plasterboard
- Fibre cement
- Ceramic
- Russian birch plywood
- Wood panels (MDF)
- Concrete floor

Prohibited substrates:

- Metal
- Glass
- Marble
- Plywood
- OSB (Oriented Strand Board)
- Wooden floor

Premiers soins et précautions

Health and Safety

It is recommended to wear gloves, safety glasses, and a mask during product application and handling.

First Aid

Micro-concrete contains Portland cement and sand (crystalline silica).

- In case of EYE contact: Rinse eyes with water for at least 15 minutes.
- In case of SKIN contact: Wash exposed and/or contaminated areas thoroughly after handling.
- In case of INHALATION: Move the conscious victim to fresh air.
- In case of INGESTION: Rinse mouth. Do NOT induce vomiting. Immediately call a poison center or doctor.

Responsibility

It is the user's responsibility to read the instructions before using the product.

The different products from The Surface Wizard

The TSW panels

Textured Concrete



Textured Metal



Sleek Concrete



The TSW Micro-Concrete kits

Wall
Kit



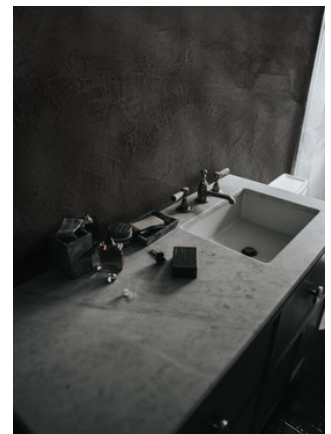
Bathroom
kit



Floor
kit



Backsplash/
Countertop kit



Installation products

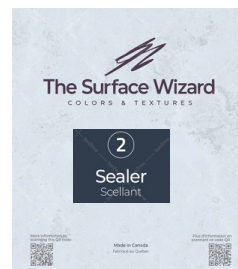
Adbond Extreme



Finishing
Mortar



Sealer



Varnish



The different possible installations

PLACES	Simple accent wall (no water / no heat)				In contact with heat (max. 392°F)	Damp interior room (little)	In direct contact with water		Highly stressed surface
INTERIORS	Living room / lunchroom	Bedroom	Kitchen (wall)	Ceiling	Fireplace facade	Bathroom (wall)	Backsplash	Shower walls	Flat and level surface / Floor
Textured Concrete TSW	✓	✓	✓	✓	✓	* ✓	** ✓	✗	✗
Textured Métal TSW	✓	✓	✓	✓	✗	* ✓	** ✓	✗	✗
Sleek Concrete TSW	✓	✓	✓	✓	✓	* ✓	** ✓	** ✓	✗
Micro-Concrete Surface TSW Wall Kit	✓	✓	✓	✓	✓	✗	✗	✗	✗
Micro-Concrete Surface TSW Bathroom kit Floor kit Countertop and Backsplash it	✗	✗	✗	✗	✗	✓	✓	✓	✓




*It is recommended to add two additional coats of sealer.
 **It is recommended to add two additional coats of sealer and two coats of Silex varnish.
 For your information: Our panels are fire-resistant, but prolonged contact with heat can alter the finish.

Downloadable resources



<https://www.thesurfacewizard.com/fr/documents>

Contact

-  Montréal, H4T 1Y4
Québec, Canada
-  support@thesurfacewizard.com
-  www.thesurfacewizard.com

