



#4D384F

Presentation booklet

Micro-Concrete Surface TSW



Generalities

Explore a world where the beauty of concrete meets contemporary elegance. With The Surface Wizard's polished concrete, transform every surface into a refined work of art, blending durability and aesthetics for an incomparable style.

Standard kit formats

Wall kit:

10, 30, 55, 120 p.c.

Bathroom kit:

10, 25, 50, 110 p.c.

Countertop and backsplash kit:

10, 25, 50, 110 p.c.

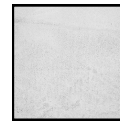
Floor kit:

10, 25, 50, 110 p.c.

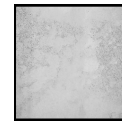
Colors



White



Ice



Ciment



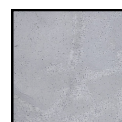
Granite



Gunmetal



Earth
Gray



Azure Blue



Tropical
Gray

Description

Discover the ultimate revelation in the world of surface coatings: **Micro-Concrete** by The Surface Wizard. With a seamless fusion of traditional craftsmanship and modern innovation, our micro-concrete embodies contemporary elegance and uncompromising durability.

The Surface Wizard's micro-concrete offers unparalleled versatility, adapting to a multitude of surfaces to create unique and captivating spaces. Whether for a sophisticated kitchen, a welcoming living room, or a luxurious bathroom, our micro-concrete transforms every environment into a functional work of art.

Its exceptional resistance to impacts, scratches, and stains makes it a wise choice for high-traffic areas, while offering unmatched ease of maintenance. With The Surface Wizard, your surface remains impeccable and dazzling year after year.

Our commitment to sustainable innovation means that our micro-concrete is not only beautiful but also environmentally friendly. Made with high-quality materials and eco-responsible production processes, you can enjoy your space with peace of mind, knowing that you have chosen an eco-friendly solution.

For a design experience without compromise, choose micro-concrete by The Surface Wizard.

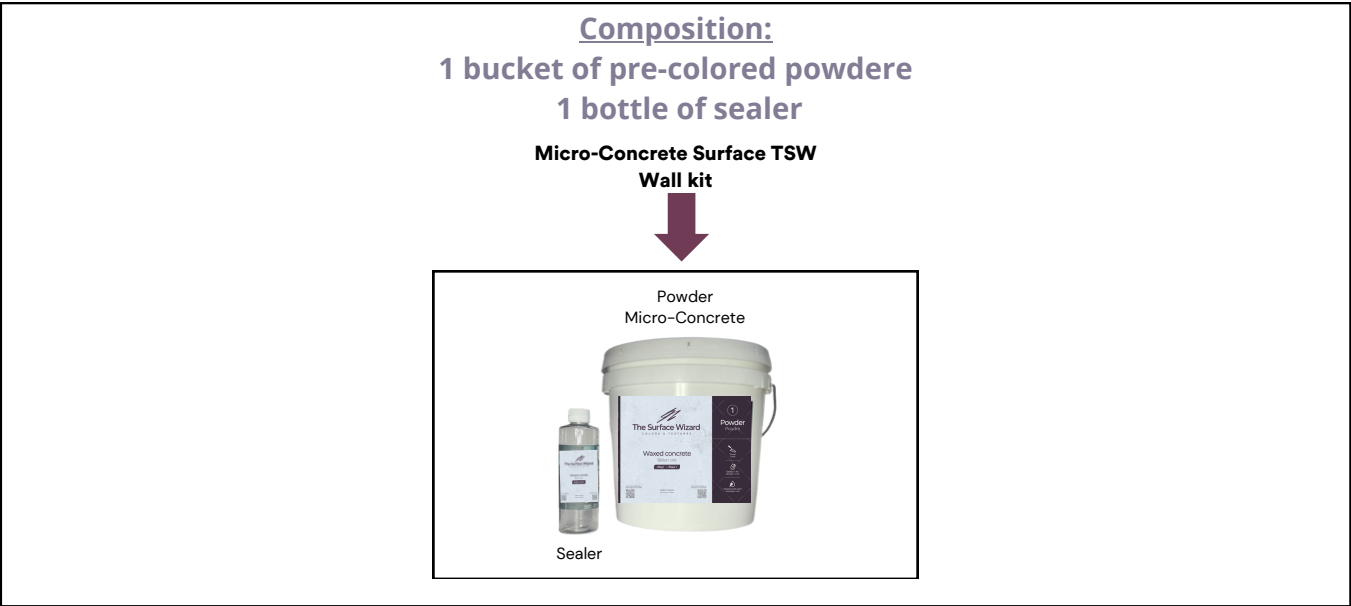
Application

The application of micro-concrete is simple and versatile. Use a trowel to apply it to a variety of surfaces, except glass and metal. Perfect for walls, floors, countertops, and even showers, its smooth finish and subtle visual effects make it an ideal choice for a modern touch in any room.

Composition of the kits

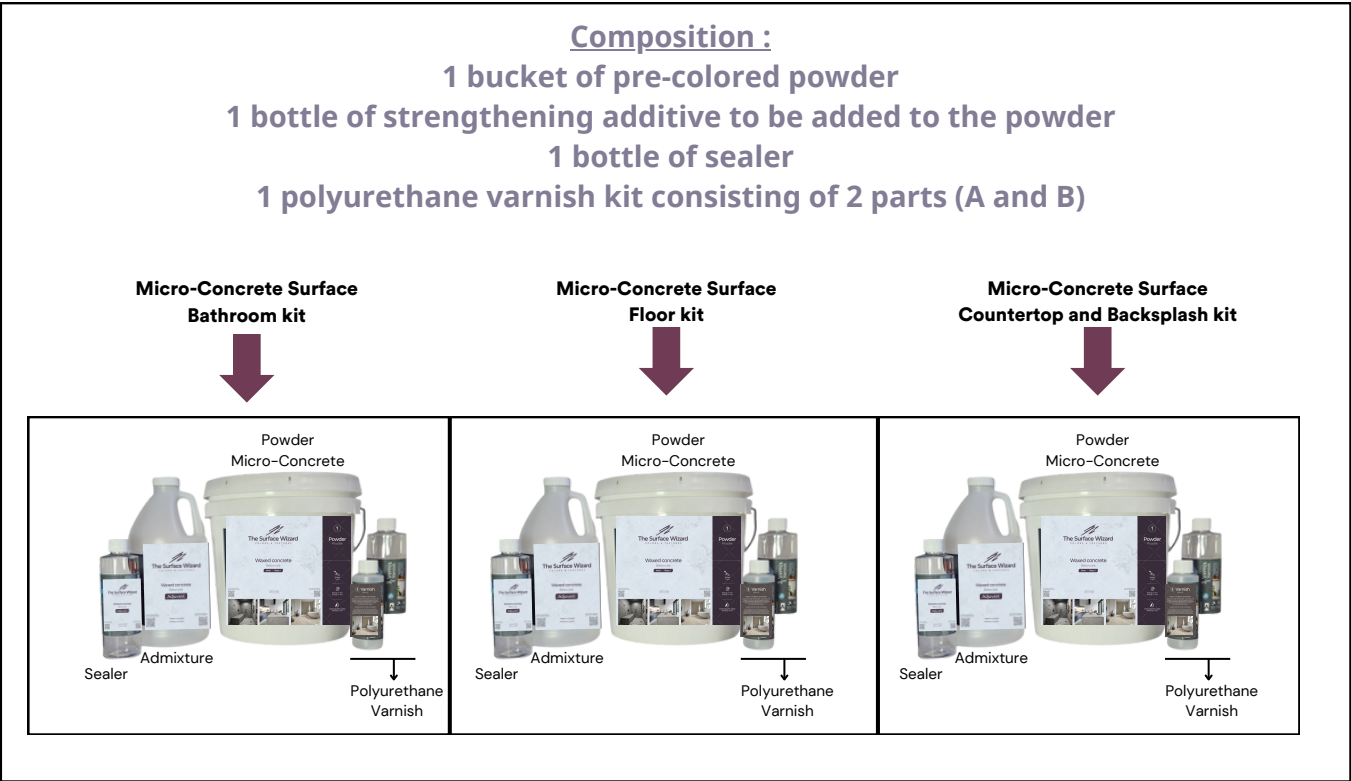
To avoid running out of product, it is recommended to plan for an additional quantity of approximately **10%**.

For low-traffic surfaces, the wall kit is ideal!
3 kits: 10, 55, 120 sq ft



The wall kit contains enough quantity for **two coats of micro-concrete** and **one coat of sealer**.

For high-traffic surfaces - Opt for increased protection!
4 kits: 10, 25, 50, 110 sq ft



Each of these kits for high-traffic surfaces contains the quantity necessary to apply **two coats of micro-concrete**, **two coats of sealer**, and **two coats of water-based polyurethane varnish**.

Equipment Required for Installation

• For your protection



Gloves



Protective glasses



Protection's mask against dust

• For Surface Protection



Bâche de protection



Painter's tape



Microfiber cloths



Waste container

*Protect your surface the same way you would paint.

• For mixing the coating



A bucket for mixing mortar



A measuring cup



A mortar mixer (optional)



A drill (optional)

• For applying the coating



A flexible stainless steel trowel with progressive rounded edges and corners



A 4" or 5" joint knife



A grout sponge

• For sealant application



A paint tray



Microfiber cloths



A paint brush



Dye pads



Foam lacquer roller

• For sanding



120 and 220 grit sandpaper



Eccentric sander (optional, ideal for a large surface)

• For applying varnish



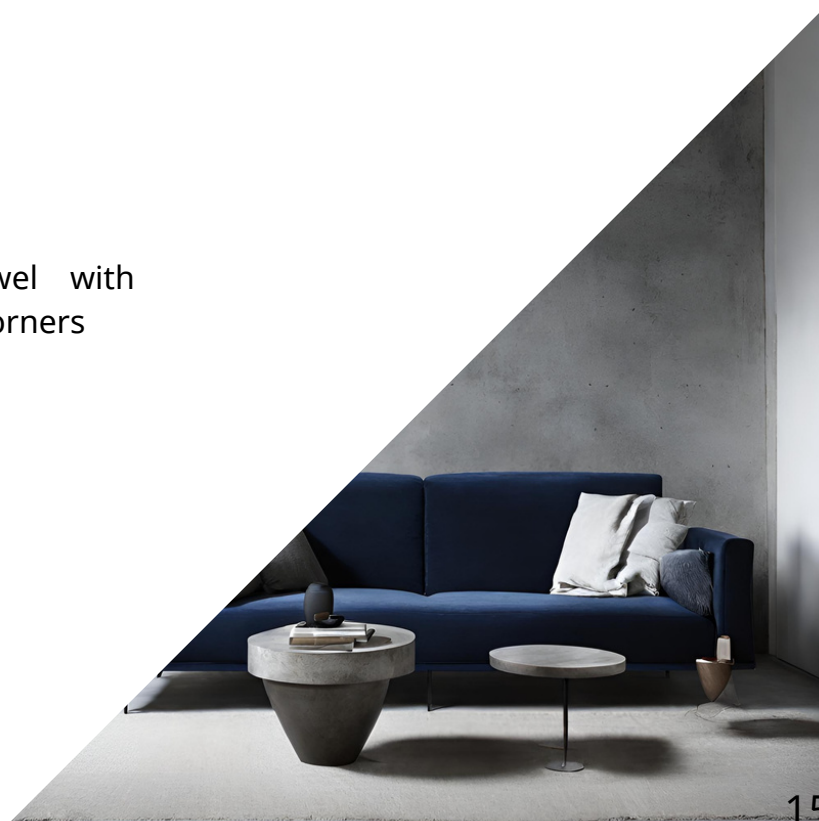
A clean paint tray



Foam lacquer roller



A paint brush





Accepted substrates

Accepted substrates:

- Plasterboard
- Fibre cement
- Ceramic
- Russian birch plywood
- Wood panels (MDF)
- Concrete floor

Prohibited substrates:

- Metal
- Glass
- Marble
- Plywood
- OSB (Oriented Strand Board)
- Wooden floor

Premiers soins et précautions

Health and Safety

It is recommended to wear gloves, safety glasses, and a mask during product application and handling.

First Aid

Micro-concrete contains Portland cement and sand (crystalline silica).

- In case of EYE contact: Rinse eyes with water for at least 15 minutes.
- In case of SKIN contact: Wash exposed and/or contaminated areas thoroughly after handling.
- In case of INHALATION: Move the conscious victim to fresh air.
- In case of INGESTION: Rinse mouth. Do NOT induce vomiting. Immediately call a poison center or doctor.

Responsibility

It is the user's responsibility to read the instructions before using the product.

The different products from The Surface Wizard

The TSW panels

Textured Concrete



Textured Metal



Sleek Concrete



The TSW Micro-Concrete kits

Wall
Kit



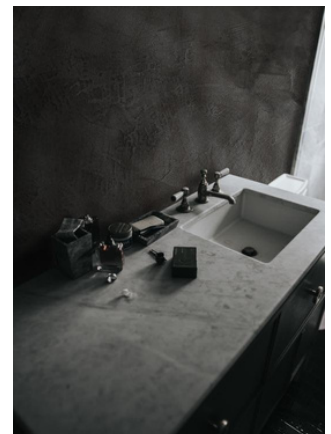
Bathroom
kit



Floor
kit



Backsplash/
Countertop kit



Installation products

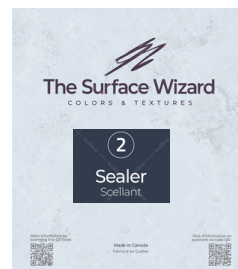
Adbond Extreme



Finishing
Mortar



Sealer



Varnish



The different possible installations

PLACES	Simple accent wall (no water / no heat)				In contact with heat (max. 392°F)	Damp interior room (little)	In direct contact with water		Highly stressed surface
INTERIORS	Living room / lunchroom	Bedroom	Kitchen (wall)	Ceiling	Fireplace facade	Bathroom (wall)	Backsplash	Shower walls	Flat and level surface / Floor
Textured Concrete TSW	✓	✓	✓	✓	✓	* ✓	** ✓	✗	✗
Textured Métal TSW	✓	✓	✓	✓	✗	* ✓	** ✓	✗	✗
Sleek Concrete TSW	✓	✓	✓	✓	✓	* ✓	** ✓	** ✓	✗
Micro-Concrete Surface TSW Wall Kit	✓	✓	✓	✓	✓	✗	✗	✗	✗
Micro-Concrete Surface TSW Bathroom kit Floor kit Countertop and Backsplash it	✗	✗	✗	✗	✗	✓	✓	✓	✓

*It is recommended to add two additional coats of sealer.

**It is recommended to add two additional coats of sealer and two coats of Silex varnish.

For your information: Our panels are fire-resistant, but prolonged contact with heat can alter the finish.

Downloadable resources



<https://www.thesurfacewizard.com/fr/documents>

Contact

Montréal, H4T 1Y4
Québec, Canada

support@thesurfacewizard.com

www.thesurfacewizard.com

